



S 400

Control unit 24 V

Area of use

S 400 is developed for automatic control of the damper motor **SAS 24** for opening and closing of damper.

Function

Controlling time delay to evacuate remaining gases is built into the control unit (1, **Fig 1**). Time is adjustable from between 0-15 minutes.

Fans are usually controlled by the **S 600** transformer unit, and in those cases the **S 400** is supplied with 24 VAC (2) from the **S 600**.

The LED (3) indicates operation.

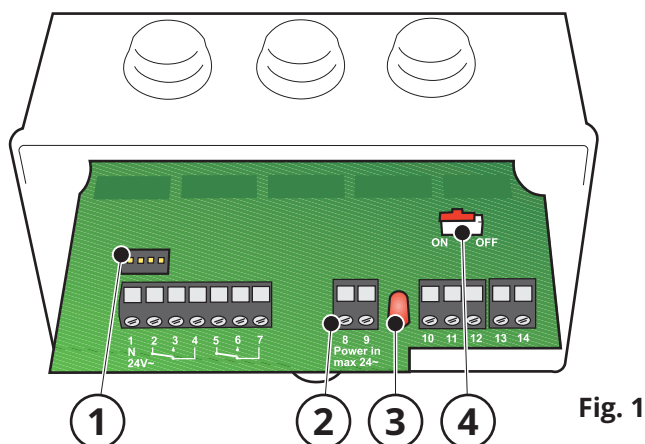


Fig. 1

Technical data

Dimensions: 130x105x77 mm
 Weight: 265 g
 Material: ABS/PC
 Enclosure class: IP54
 Ambient temperature: 0 °C to 50 °C
 Power supply: 24 VAC
 Terminal: Max 1.5 mm²/terminal
 Meet standards: Rohs directive 2011/65/EU

Installation

See circuit diagram page 2, **Fig 5**.

1-4, 24V~ Connection damper SAS-xxx/24
5-7, Potential free VX-connection (Max 24V~)
8-9, 24V~ Power supply
10-14, Connection sensors (NPN, 15V)

Built in timer

To activate / deactivate timer adjust the switch (4, **Fig 1**). If timer is placed in **ON** mode this will enable adjustments of time delay on the switch panel (1) as illustrated below.

Delivery setup

The timer is activated and set on 1 minute, see **Fig 3**.

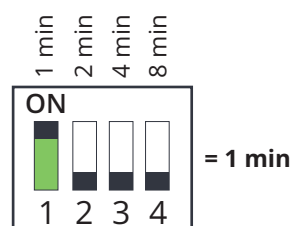


Fig. 2

Example of setup (Fig 3-4):

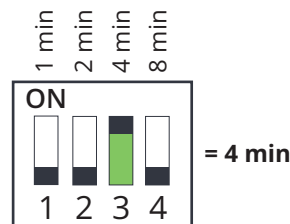


Fig. 3

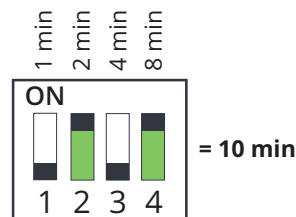


Fig. 4

Maintenance

Maintenance free.

Accessories

STG 400, for automatic adjustments, connect to ground cable on the welding machine for automatic start / stop.

SSB, SFC SB, Switch for manual start / stop.

Circuit diagram

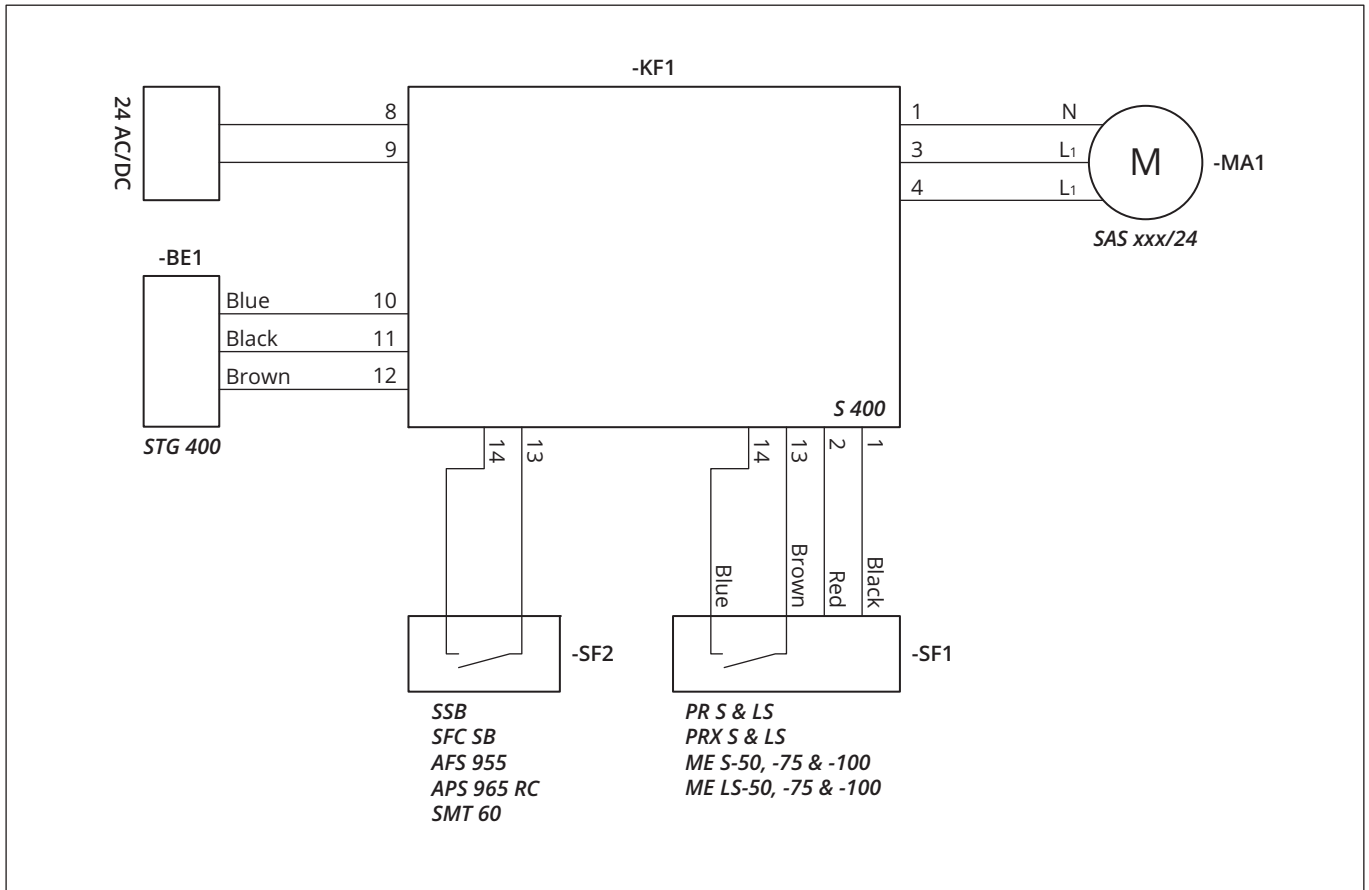


Fig. 5